

# LOMA Society of Greater Des Moines

March 2004

## There's Still Time to Renew Your Membership

*Don't forget to Join Now if you haven't already done so*

Membership in the LOMA Society of Greater Des Moines is still a great bargain. Dues are still only \$20 and there are so many reasons you want to be a member this year:

- April 20th Spring Seminar at Art Center, featuring creativity and development
- Fall Dinner November 4 with Iowa Insurance Commissioner, at the Raccoon River Nature Lodge
- New Volunteer Opportunities for Society members, to increase personal involvement in our community

*continued on page 2*



## Expect a Creative Spring Seminar at the Art Center!

*Don't miss this Seminar – Save the morning of April 20*

The Spring Seminar this year is scheduled for **April 20** at the Des Moines Art Center, 4700 Grand Ave., from 8:00 a.m. to 11:30 a.m. With a theme of Creativity, members will enjoy creative activities and speakers, following breakfast in the Art Center Restaurant (pictured in adjoining column from the courtyard view).

Guest speakers include Denise Walsh and Marlene Vickstrom from Principal Financial Group. They offer a hands-on, group participation approach that promises fun for everyone. Next, a panel of experts drawn from member companies will speak in Levitt Auditorium, focusing on creativity and innovation in Training & Development. Panel members include Penny Galbreath, Wellmark Blue Cross Blue Shield, Lloyd Lofton, American Republic, Cindy Sullivan, Guide One and Denise Walsh, Principal Financial Group

The Art Center's unique facility will make this an unforgettable event. Expect your invitation by the end of March. For more information, e-mail Denna Large, at [large.denna@principal.com](mailto:large.denna@principal.com) or call 515.248.2556.

### ***Fun Facts about the Des Moines Art Center***

*The Art Center's unique facility was created by world-renowned architects Eliel Saarinen, I.M. Pei and Richard Meier.*

*A new downtown location opened in 2003 at 800 Walnut in the Wells Fargo building – hours are 10 to 6 Monday-Friday.*

### **FROM YOUR PRESIDENT . . .**

#### **By Denna Large**

Hopefully everybody survived through the busy year-end. And now the April 15 tax deadline is quickly approaching. How many of you wait until the last possible minute and sit in line at the post office to get your tax return postmarked by April 15? *If that's not*

*continued on page 3*

### **INSIDE THIS ISSUE**

- 1** There's Still Time to Renew Your Membership
  - 1** Expect a Creative Spring Seminar at the Art Center
  - 1** From Your President
  - 2** Scholarship Deadline is April 1 for 2004-5 Year
  - 2** Society Members Volunteer at Food Pantry
  - 3** Members Corner
  - 4** Officers and Board Members and Treasurer's report
- Articles contributed by: Denna Large and Mara Swanson. Editor: Mara Swanson

continued from page 1

- \$1,500 annual scholarship exclusively for Society members or their immediate family
- Name change to LOMA Society reflecting the expansion of eligibility to LOMA designations other than FLMI
- Quarterly newsletters to keep you up-to-date about events, other members, and the financial services industry

Visit our web site for a membership application form and instructions at [www.flmi-dsm.com](http://www.flmi-dsm.com). Please let any board member know if you have questions.

## Did you Notice . . . our New Name?

2004 will be a transition year as the FLMI Society changes its name to the LOMA Society. We've begun by changing this newsletter name – LOMA wants to encourage better name recognition and additional support for local Societies from the Financial Services industry.

The name change is effective immediately but we have until January 1, 2005 to update our records.



( ↓ from left to right: Paula Oxenford & Jennifer Hindman working at St Mary's)



## Scholarship Deadline Is April 1 for 2004-5 Year

The Society's \$1,500 scholarship deadline is approaching . . . remember eligibility changed last year to be exclusively for a Society member or their immediate family. We are looking for someone, either a full or part-time student, who is pursuing a post secondary education with a business or related major, and who plans to pursue a career in the insurance or financial services industry. This could be a great opportunity for someone--just ask Renee Wilson at Wellmark, our 2003-2004 winner.

Applications are due by April 1, 2004, with the winner announced May 1, 2004. For additional information and application requirements and forms, please visit our web site [www.flmi-dsm.com](http://www.flmi-dsm.com) or contact any Board member.

**APPLY TODAY!**

## Society Members Volunteer at Food Pantry

Eight members of the Society helped the local area food pantry at St. Mary's Family Center in East Des Moines. Director Chris Rohwer welcomed two teams of volunteers on December 16<sup>th</sup> and December 19<sup>th</sup>, 2003. Volunteers included Denna Large, Mara Swanson, Susan Pinneke, Sheryl Parker, Jeani Welsh, Joni Burrell, Paula Oxenford and Jennifer Hindman (see picture on left). They unloaded trucks, stocked shelves, sorted food and clothes and took part in lots of other activities necessary to keeping up with the every-increasing demands placed on the Center.

### You Can Help

The food pantry has been a project of the Society for many years. We will continue support in 2004 with non-perishable goods and financial contributions at meetings. We also need volunteers to lend a helping hand each quarter, for 2 hours Friday mornings from 10 a.m. to 12 noon. The 2004 dates are March 19, June 18, September 17 and December 10. To schedule yourself for one of these times, contact Denna Large at [large.denna@principal.com](mailto:large.denna@principal.com).

## Members Corner

Congratulations to Anand Darla, a software developer for SALT Solutions, who recently met the requirements to become a Microsoft Certified Professional. Anand holds an Engineering degree from his native country of India.

Ami Hokomoto with Principal recently visited family in Hawaii, where she walked on the newest earth on earth (the July 2003 lava flow). 2004 will be a memorable year for Ami who is expecting her first child in June and will earn her MBA in December.

Volunteer commitment will increase for Sherry Beam from Amerus as she becomes board chair of a local support group for the Brain Injury Association. She has been serving on the board for the past three years.

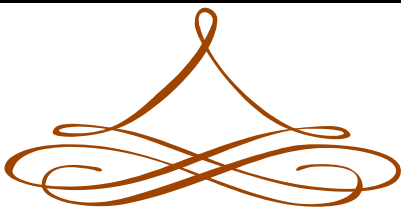
Mary Marshall from Principal recently returned from a vacation "with a purpose" in Jamaica. Mary and her husband joined others working at a home for severely handicapped children. While Mary sewed clothes and cared for the children, her husband re-roofed part of a building.

With deepest sympathy: Erin Welsh, son of Jeani and Phillip Welsh passed away on February 22.

---

Be sure to send your news for future issues to editor [swanson.mara@principal.com](mailto:swanson.mara@principal.com) or through the web site at [www.flmi-dsm.com](http://www.flmi-dsm.com)

---



## HOW TO CONTACT US

PLEASE FEEL FREE TO CALL OR E-MAIL ANY OFFICER OR VISIT OUR WEB SITE AT [WWW.FLMI-DSM.COM](http://WWW.FLMI-DSM.COM). IF YOU WANT TO WRITE, HERE'S THE ADDRESS:

**LOMA SOCIETY OF GREATER DES MOINES**  
**POST OFFICE BOX 93432**  
**DES MOINES, IA 50393-3432**

you, chances are you know somebody like that.

Another important date this April is our Spring Seminar on April 20. This will be a unique meeting about Creativity and Innovation at work. If your personal or work goals include creativity and innovation, this seminar will help with that. Hope all of you can come.

One of my goals is continuing education. I love to learn new things and stay on top of the constantly changing financial services industry. Some of you might remember I took two NIPA exams in December. I can happily say I passed both! Another goal of mine was to take the second PCS exam, which I did in March and also passed. So now I'm just one step away from that PCS designation!!

If you're reading this and wondering what the PCS designation is, you can go to LOMA's website at [www.loma.org](http://www.loma.org) and find information on all LOMA designations. I think one of the new designations, FFSI, will be very beneficial. I'm excited to learn more about it and plan to work on it as soon as I get my PCS.

Talk to everybody soon. Get out and enjoy that spring weather that's coming soon! And maybe take a book with you.

## COMMITTEE REPORTS . . .

Education Chair Susan Pinneke began a new Ed Rep newsletter. The first issue has gone out and was well received.

Vice President Mara Swanson has been busy lining up program speakers and making arrangements for this year's meetings. She has also written several articles that will appear in the national Resource magazine.

Volunteer Coordinator Chris Trimble has checked out a number of possible volunteer projects where members could contribute this year. Members will be asked for their input at the April meeting.

Sheryl Parker has produced Board minutes each month and routed to Board members and Joni Burrell has done monthly, quarterly and year to date Treasurer's reports.

Joni was honored recently by being asked to help rewrite LOMA's by-laws as they are revised to reflect the name change and expansion to designations other than FLMI.

## 2004 BOARD MEMBERS

### PRESIDENT, DENNA LARGE

PRINCIPAL FINANCIAL GROUP

515-248-2556

E-mail: [large.denna@principal.com](mailto:large.denna@principal.com)

### VICE PRESIDENT & NEWSLETTER EDITOR

#### MARA SWANSON

PRINCIPAL FINANCIAL GROUP

515-247-8535

E-mail: [swanson.mara@principal.com](mailto:swanson.mara@principal.com)

### SECRETARY, SHERYL PARKER

PRINCIPAL FINANCIAL GROUP

515-248-0403

E-mail: [parker.sheryl@principal.com](mailto:parker.sheryl@principal.com)

### TREASURER & MEMBERSHIP CHAIR

#### JONI BURRELL

PRINCIPAL FINANCIAL GROUP

515-247-6580

E-mail: [burrell.joni@principal.com](mailto:burrell.joni@principal.com)

### EDUCATION CHAIR, SUSAN PINNEKE

PRINCIPAL FINANCIAL GROUP

515-247-6363

E-mail: [pinneke.susan@principal.com](mailto:pinneke.susan@principal.com)

### PUBLIC RELATIONS CHAIR, SANDI STRANDBERG

AMERICAN REPUBLIC INSURANCE CO

515-247-6363

E-mail: [sandi\\_strandberg@aric.com](mailto:sandi_strandberg@aric.com)

### WEB MASTER, JEAN WELSH

515-224-1432

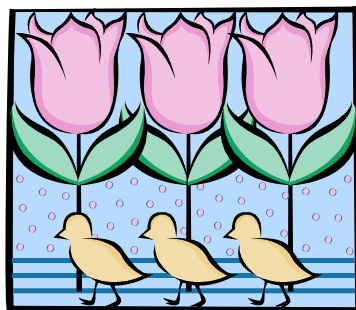
E-mail: [pwelsh0525@aol.com](mailto:pwelsh0525@aol.com)

### VOLUNTEER COORDINATOR, CHRIS TRIMBLE

PRINCIPAL FINANCIAL GROUP

515-557-9770

E-mail: [trimble.chris@principal.com](mailto:trimble.chris@principal.com)



## Treasurer's Report

### September 30, 2003 to December 31, 2003

SUBMITTED BY TREASURER, JONI BURRELL

#### Revenues

Fall Meeting reservations	\$ 975.00
2004 membership dues	20.00
Interest earned on Money Market account	5.51
Total Revenue	\$ 1,000.51

#### Expenditures

2002 Fall Dinner Meeting – to Stoney Creek	\$ 798.18
Other Fall meeting expenses	144.89
Matching gift to Emergency Food Pantry	5.00
Ed Rep Breakfast Expenses	238.37
Upper Iowa Univ, 2002-2003 Scholarship	750.00
LOMA Conference – convention expenses	1,537.96
Post Office – Box Rental and Keys	48.00
Library Foundation Donation	200.00
Web maintenance	200.00
Ahrold Fay & Co. - bond renewal	100.00
Miscellaneous	54.60
Total Expenditures	\$ 4,077.00
Net Increase (Decrease)	(3,076.49)
Checkbook balance on December 31, 2003	\$ 315.95
Money Market balance on December 31, 2003	\$ 6,126.78
Cash balance on December 31, 2003	\$ 6,442.73

---

*LOMA is a non-profit trade association in the financial services industry, committed to a business partnership with its world-wide members in the insurance and financial services industry—to improve their management and operations through quality employee development, research, information sharing, and related products and services. To find out more about LOMA and the learning opportunities the Association offers, visit LOMA's Web site at [www.loma.org](http://www.loma.org)*

---